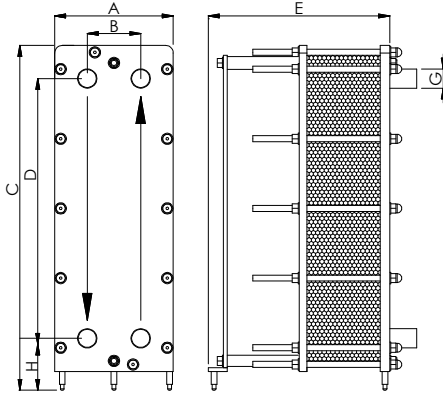


APPLICATIONS	Food, pharmaceutical and chemical sectors
MAX. FLOW RATE	With water 40 m ³ /h (DN50) and 50 m ³ /h (DN65)
FRAME	PN6, PN10 (on request also PN16)

TSC1421

MATERIALS	FRAME	Stainless steel AISI 304L Stainless steel AISI 316L	PLATES	Stainless steel AISI 304 Stainless steel AISI 316L Titanium Alloy SMO 254
	GASKETS	NBR EPDM FKM		CLAMPING BOLTS

DIMENSIONS

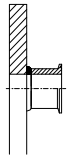


NOMINAL PRESSURE	PN6	PN10
A (mm)	310	317
B (mm)		140
C (mm)		916
D (mm)		690
H (mm)		138
G (mm)	DN50 (2") DN65 (2 1/2")	
Plate surface (m ²)	0,169	
Vol. of channel (l)	0,36	
Weight of plate (Kg)	0,8	
Plate thickness (mm)	0,5	
Weight of frame (Kg)	125	165
Clamping bolts	N°12 M16	N°12 M20
E (mm)	475 (max 73 plates) 695 (max 117 plates) 835 (max 145 plates) 985 (max 175 plates)	

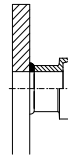
The plate heat exchangers are made according to the **PED 2014/68/UE**

Note: the above quantities can be considered an expanability of 20% for each length. The max quantity of plates for this exchanger is **209**

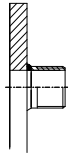
CONNECTION TYPE



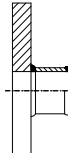
- Clamp Stainless steel DN50
- Clamp Stainless steel DN65



- DIN 11851 Stainless steel DN50
- DIN 11851 Stainless steel DN65



- Threaded Stainless steel G2"
- Threaded Stainless steel G2 1/2"



- Flange DN50
- Flange DN65

Disponibile anche ANSI